

Damage Assessment Summary for Kyaukpyu:

(Based on satellite imagery recorded on morning of 25 October 2012)

Summary of main findings: A total of 811 destroyed building structures were identified on the eastern edge of Kyaukpyu city, likely caused by arson attacks occurring less than 24 hours earlier on 24 October 2012. This zone of near total destruction measures 14.4ha in area and included both normal buildings (633) as well as 178 house boats and floating barges adjacent on the water. There are no indications of building damages immediately to the west and east of this zone of destruction.



Damage Analysis: HRW; Image Copyright: DigitalGlobe 2012; Source: EUSI



Damage Analysis: HRW; Image Copyright: DigitalGlobe 2012; Source: EUSI

Kyaukpyu on 9 March 2012



Kyaukpyu on 25 October 2012



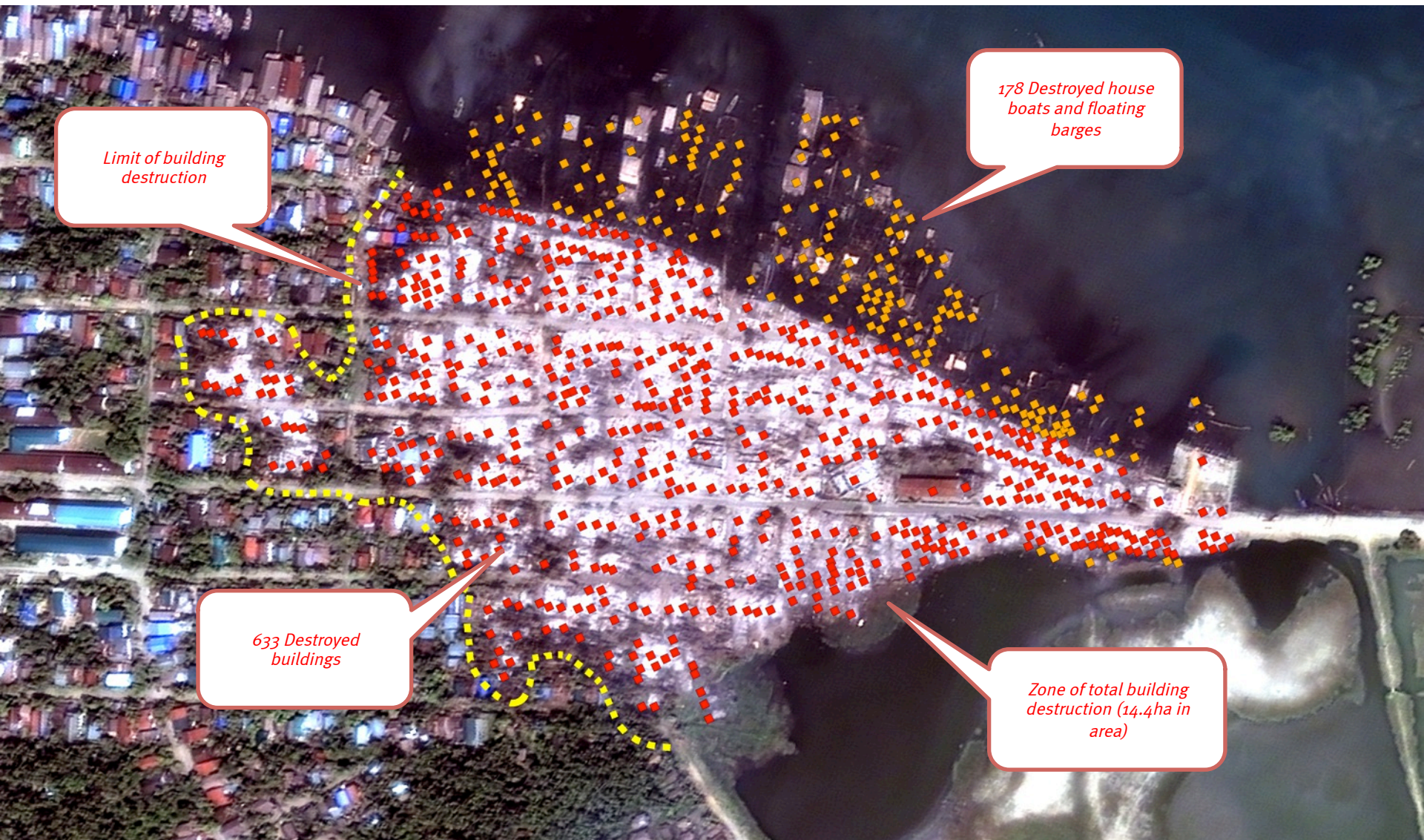
*Limit of building
destruction*

*178 Destroyed house
boats and floating
barges*

*633 Destroyed
buildings*

*Zone of total building
destruction (14.4ha in
area)*

Kyaukpyu on 25 October 2012



Kyaukpyu on 9 March 2012 (with damaged sites marked)

