

# OVERVIEW OF FLOOD WATERS IN KILINOCHCHI DISTRICT, SRI LANKA

Flood Analysis with Radarsat Data Recorded 1 December 2008 & 21 June 1998 & ENVISAT-ASAR Data Recorded 11 November 2008

This map illustrates satellite-detected water over the flood-affected district of Kilinochchi, Sri Lanka. Probable flood waters were detected with Radarsat data acquired on 1 December 2008 at a spatial resolution of 25m. Pre-flood Radarsat data from 21 June 1998 & ASAR-WSM radar data from 11 November 2008 was also used in this analysis. This flood assessment is a preliminary analysis & has not yet been validated in the field.

Disaster coverage by the International Charter 'Space and Major Disasters'. For more information on the Charter, which is about assisting the disaster relief organizations with multi-satellite data and information, visit [www.disasterscharter.org](http://www.disasterscharter.org)

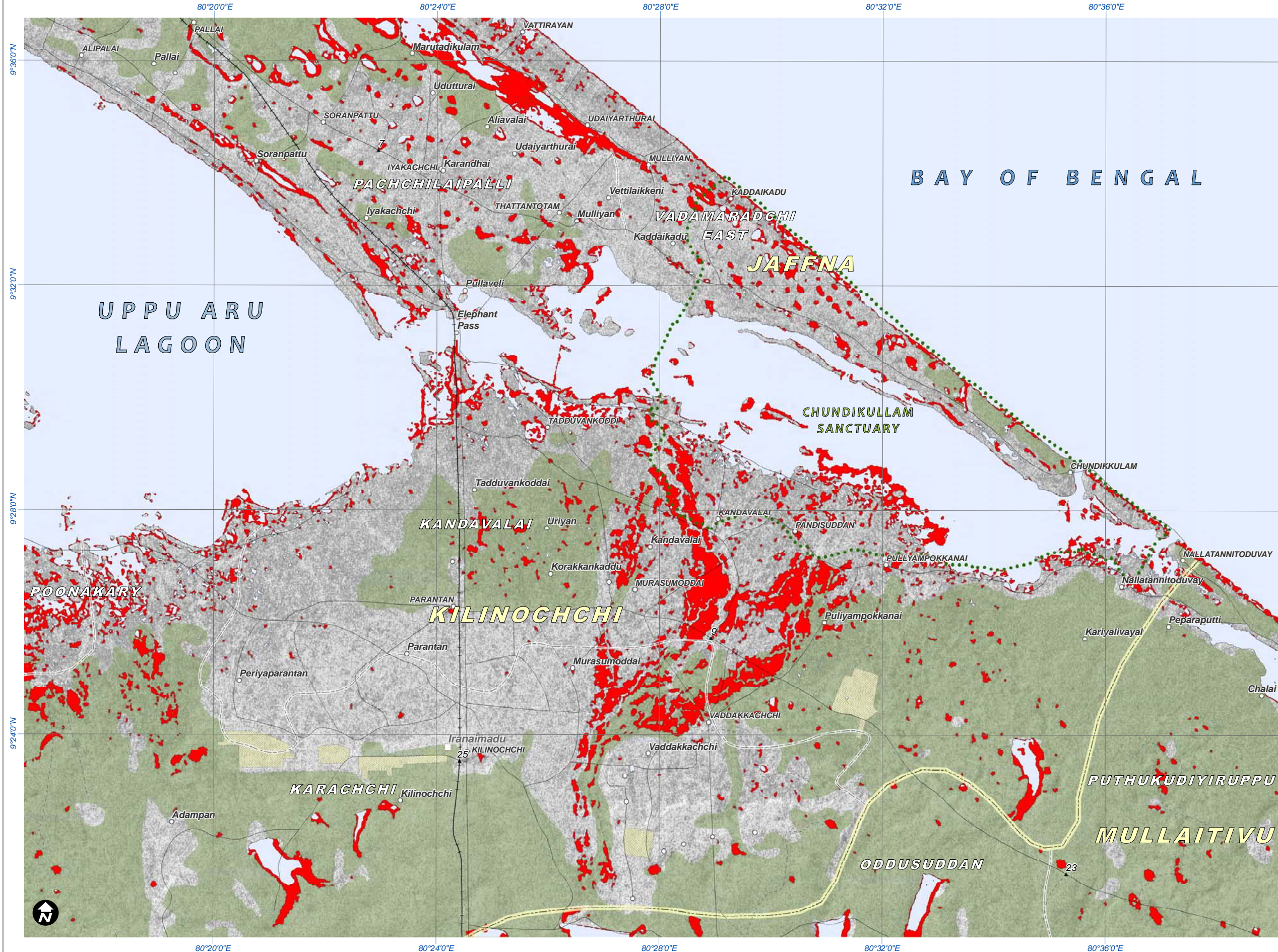


Heavy Rainfall & Flooding 3 December 2008



Version 1.0

Glide No: TC-2008-000237-LKA



**Legend**

□ ..... City	..... District Boundary
○ ..... Village / Town	..... Division Boundary
▲ ..... Spot Height (m)	..... Main Road
■ ..... Built-up Area	..... Railroad
..... Protected Natural Area	..... Forest Cover

**RADARSAT WATER CLASSIFICATION:**

- Flood Water / Flood-Affected Areas (1 December 2008)
- Pre-Crisis Standing Waters (21 June 1998)

**Map Scale for A3: 1:120,000**

0 0.5 1 2 3 4 5 6 km

Satellite Data ..... Radarsat (25m)  
 Date ..... 1/12/2008 & 21/6/98  
 Source ..... Canadian Space Agency (2008)  
 Satellite Data (2) ... ENVISAT-ASAR WSM  
 Date ..... 11 November 2008  
 Source ..... ESA (2008)  
 Other Data ..... GIST, OCHA, ESRI, USGS, NGA  
 Flood Analysis ..... UNOSAT (2008)  
 Map Production ..... UNOSAT (2008)  
 Projection ..... UTM Zone 44 North  
 Datum ..... WGS 1984

The depiction and use of boundaries, geographic names and related data shown here are not warranted to be error-free nor do they imply official endorsement or acceptance by the United Nations. This map was produced by the United Nations Institute for Training and Research (UNITAR) Operational Satellite Applications Program (UNOSAT). UNOSAT provides satellite imagery & related geographic information to UN humanitarian & development agencies & their implementing partners.

**UNOSAT**

satellite solutions for all  
 Contact Information: [info@unosat.org](mailto:info@unosat.org)  
 24/7 Hotline: +41 76 487 4998  
[www.unosat.org](http://www.unosat.org)